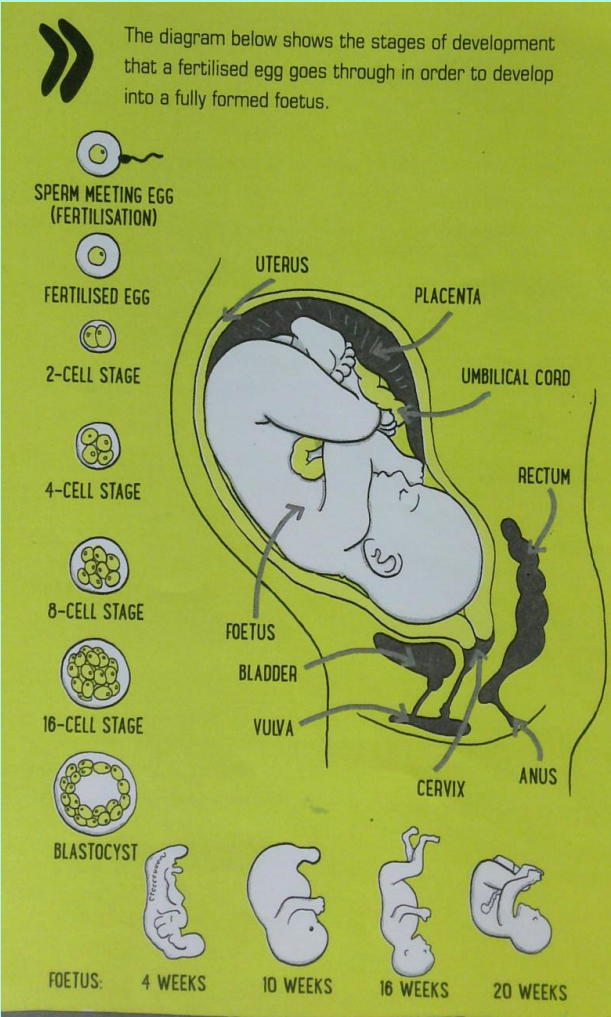


Year 6 Resources



BEFORE PUBERTY

AFTER PUBERTY

MOST BODIES START WITH TWO NIPPLES, BUT IT'S NOT UNCOMMON FOR A BODY TO HAVE THREE OR MORE.

NIPPLES AND AREOLAS COME IN LOTS OF SHAPES, SIZES, AND COLORS, AND THEY CAN CHANGE OVER A LIFETIME.

ABOUT FEELING SEXY, SOME NIPPLES ARE JUST PERKY, AND SOMETIMES IT'S JUST ABOUT BEING COLD!

THE AREA AROUND THE NIPPLE IS CALLED THE AREOLA. THE AREOLA AND THE NIPPLE CAN BE DIFFERENT COLORS, AND THE SKIN CAN FEEL DIFFERENT FROM THE SKIN ON THE CHEST.

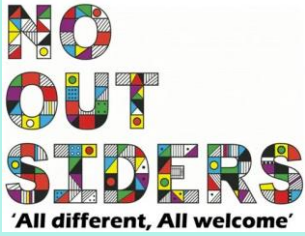
NIPPLES TEND TO BE SENSITIVE TO TOUCH AND TEMPERATURE. WHEN NIPPLES ARE COLD, THE SKIN AROUND THEM TIGHTENS AND THE NIPPLE STICKS OUT. THE SAME THING HAPPENS IF NIPPLES ARE RUBBED AND FEEL GOOD. BUT HAVING PERKY NIPPLES ISN'T ALWAYS

JUST BECAUSE THEY ARE SENSITIVE DOESN'T MEAN EVERYONE LIKES HAVING THEIR NIPPLES TOUCHED. SOME PEOPLE DO, AND FOR SOME PEOPLE IT'S NEITHER GOOD NOR BAD.

NIPPLE

AREOLA

CHEST



Year 6 Resources

THE CLITORIS IS A MIDDLE PART THAT IS BOTH INSIDE AND OUTSIDE THE BODY. SOME CLITORISES ARE BIGGER THAN OTHERS. SOME ARE EASIER TO FEEL AND SEE THAN OTHERS.

THE SMALLEST PART OF THE CLITORIS IS ON THE OUTSIDE OF THE BODY AT THE TOP OF THE VULVA, WHERE THE TWO SIDES OF THE LABIA MEET. THIS IS CALLED THE GLANS. IT IS USUALLY HIDDEN UNDER A LITTLE HOOD, BUT IF THE HOOD IS PULLED BACK IT'S EASIER TO FEEL OR SEE IT WITH A MIRROR.

THE BIGGEST PART OF THE CLITORIS IS INSIDE THE BODY. INSIDE THE BODY THE CLITORIS DIVIDES INTO TWO PARTS, LIKE ARMS, THAT RUN ON EITHER SIDE OF THE VAGINA.

WHEN A CLITORIS IS TOUCHED OR RUBBED, THE PART ON THE OUTSIDE GETS FIRMER AND A BIT BIGGER. THIS IS CALLED AN ERECTION. MOST PEOPLE THINK ERECTIONS ARE ONLY FOR PENISES, BUT THEY AREN'T.

THE CLITORIS IS USUALLY VERY SENSITIVE. THIS IS BECAUSE IT IS A SMALL AREA WITH LOTS OF HEAVY ENDINGS. IF IT IS TOUCHED TOO ROUGHLY IT CAN HURT. TOUCHING IT CAN ALSO FEEL GOOD, AND THAT GOOD FEELING CAN SPREAD THROUGH THE WHOLE BODY.

BECAUSE THE CLITORIS IS BOTH INSIDE AND OUTSIDE THE BODY, THERE ARE MANY DIFFERENT WAYS IT CAN BE TOUCHED.

BEFORE PUBERTY

AFTER PUBERTY

THE URETHRA IS A SMALL TUBE THAT HAS A HOLE OR OPENING AT ONE END WHERE URINE (A.K.A. PEE) COMES OUT. IN BODIES WITH A VULVA AND CLITORIS, THE URETHRAL OPENING IS USUALLY JUST BELOW THE CLITORIS.

BECAUSE THE URETHRA CONNECTS THE INSIDE OF THE BODY TO THE OUTSIDE, IT'S GOOD TO WASH HANDS BEFORE AND AFTER TOUCHING IT. SOME PEOPLE FIND THAT IT FEELS GOOD WHEN THEY TOUCH AROUND THEIR URETHRA, WHICH MIGHT BE BECAUSE IT'S SO CLOSE TO THE CLITORIS.

BEFORE PUBERTY

AFTER PUBERTY

SOME BODIES HAVE A PENIS AND SOME BODIES DON'T. EVERY PENIS LOOKS A BIT DIFFERENT IN SHAPE, SIZE, AND COLOR. AND EVERY PENIS LOOKS DIFFERENT WHEN IT'S SOFT AND WHEN IT'S HARD.

JUST LIKE THE CLITORIS, WHEN A PENIS IS TOUCHED OR RUBBED IT CAN GET FIRMER AND BIGGER, WHICH IS CALLED AN ERECTION.

AS THE BODY GROWS, THE PENIS GROWS TOO.

THE SHAFT IS THE LONGEST PART OF THE PENIS. IT ENDS AT THE HEAD, ALSO CALLED THE GLANS. THIS IS USUALLY THE MOST SENSITIVE PART OF THE PENIS. MOST PENISES AREN'T COMPLETELY STRAIGHT; THEY BEND ONE WAY OR ANOTHER.

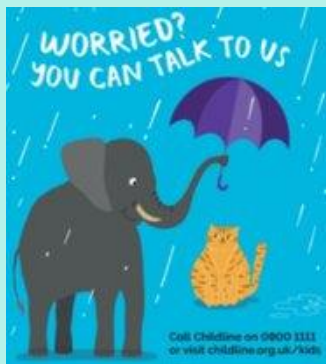
LIKE THE CLITORIS, THE PENIS CAN BE VERY SENSITIVE, ESPECIALLY AROUND THE GLANS OR TIP. TOUCHING IT CAN FEEL WARM AND TINGLY, NOT JUST IN AND AROUND THE PENIS BUT THROUGH THE WHOLE BODY.

BEFORE PUBERTY

AFTER PUBERTY

URETHRA
A SMALL TUBE, CALLED THE URETHRA, RUNS FROM THE BLADDER, THROUGH THE PENIS. THE TUBE HAS A HOLE OR OPENING THAT USUALLY ENDS AT THE TIP OF THE PENIS, WHERE URINE COMES OUT. SOMETIMES THE URETHRA ENDS ON THE UNDERSIDE OF THE PENIS AND NOT THE TIP. BECAUSE THE URETHRA CONNECTS THE INSIDE OF THE BODY TO THE OUTSIDE, IT'S GOOD TO WASH HANDS BEFORE AND AFTER TOUCHING IT.

THE URETHRAL OPENING IS ALSO WHERE EJACULATE (SEMEN) CAN COME OUT. YOU CAN READ ABOUT EJACULATION ON P. 170.



ACCEPT, RESPECT, EMPATHISE

Year 6 Resources

BEFORE PUBERTY

AFTER PUBERTY

FORESKIN **NO FORESKIN**

IF A BABY IS BORN WITH A PENIS, THERE WILL USUALLY BE A LAYER OF SKIN THAT COVERS THE END OF THE PENIS LIKE A HOOD. THIS IS CALLED THE FORESKIN. THE FORESKIN PROTECTS THE HEAD OF THE PENIS WHEN A PENIS IS SOFT.

WHEN A BODY IS YOUNG, THE FORESKIN IS TIGHT AND MAY NOT MOVE A LOT. IT'S IMPORTANT NOT TO PULL IT TOO HARD BEFORE IT LOOSENS ON ITS OWN.

SOMETIMES A FORESKIN THAT'S TOO TIGHT CAN CAUSE PAIN. WHEN THIS HAPPENS, THERE ARE THINGS A DOCTOR CAN DO TO REDUCE THE PAIN.

SOME FAMILIES CHOOSE TO HAVE THE FORESKIN REMOVED, USUALLY FOR RELIGIOUS REASONS, OR BECAUSE OTHER PEOPLE IN THEIR FAMILY AND COMMUNITY HAD IT REMOVED. THE PROCEDURE OF REMOVING THE FORESKIN IS CALLED CIRCUMCISION, AND IT'S USUALLY DONE SHORTLY AFTER A BABY IS BORN.

WHEN A PENIS IS SOFT, YOU CAN FEEL IF IT'S CIRCUMCISED BECAUSE THE HEAD IS ALWAYS VISIBLE ON A CIRCUMCISED PENIS. WHEN SELECT CIRCUMCISED AND INTACT PENISES LOOK MORE SIMILAR TO EACH OTHER.

BEFORE PUBERTY

AFTER PUBERTY

HOT TEMPS **COLD TEMPS**

SCROTUM LOOKS KIND OF LIKE A LITTLE BAG OR SAC MADE OF SMOOTH SKIN THAT SITS IN AND BEHIND THE PENIS. SCROTUM HOLDS AND PROTECTS THE TESTICLES, ALSO TESTICLES.

BODIES WITH TESTICLES HAVE TWO OF THEM. SOME HAVE LIKE BREASTS AND LABIA, TESTICLES AREN'T EXACTLY THE SAME EVEN ON THE SAME BODY CAN BE A BIT BIGGER THAN OTHER, AND ONE MIGHT HANG LOWER THAN THE OTHER.

TESTICLES ARE VERY SENSITIVE TO PRESSURE AND TEMPERATURE, WHICH IS WHY THEY ARE KEPT INSIDE THE SCROTUM. SCROTUM PROTECTS THE TESTICLES FROM BEING HIT OR BURNED, AND IT ALSO ACTS AS A KIND OF HEATING/COOLING SYSTEM TO MAKE SURE THE TESTICLES STAY AT THE RIGHT TEMPERATURE ALL THE TIME.

WHEN IT'S COLD, THE SCROTUM TIGHTENS AND PULLS CLOSER TO THE BODY, MAKING BOTH THE SCROTUM AND PENIS LOOK SMALLER. WHEN IT'S HOT, THE SKIN GETS LOOSER AND THE SCROTUM GETS LARGER, GIVING THE TESTICLES MORE ROOM TO COOL DOWN.

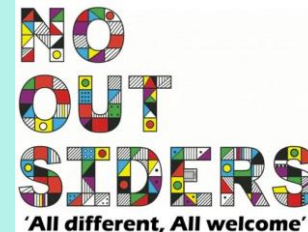
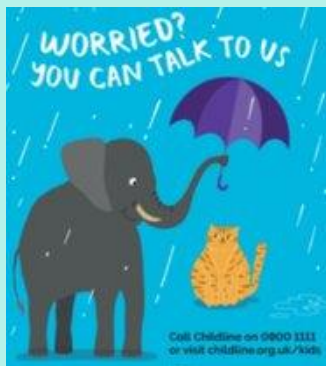
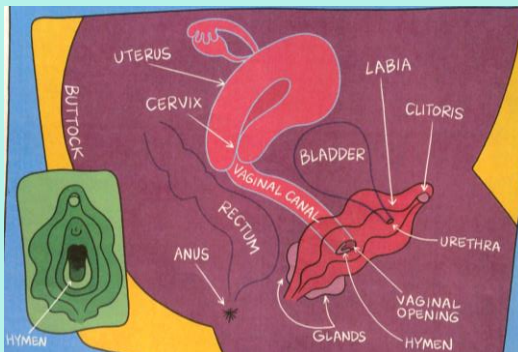
EVEN WITH THE SCROTUM PROTECTING THEM, TESTICLES CAN BE HURT IF THEY ARE TOUCHED ROUGHLY, WHICH IS WHY SOME PEOPLE WITH TESTICLES WEAR PROTECTIVE GEAR WHEN PLAYING SPORTS.

JUST LIKE THE PENIS, THE SCROTUM IS SENSITIVE TO TOUCH AND CAN FEEL VERY GOOD WHEN TOUCHED.

THE WORD ERECTION DESCRIBES WHEN A SMALL PART OF THE BODY, USUALLY THE PENIS OR CLITORIS, GETS HARD AND FEELS WARMER AND FIRMER.

TOUCH, WHEN WE ARE THINKING OF SOMETHING THAT FEELS EXCITING, ERECTIONS CAN HAPPEN AT NIGHT WHEN WE ARE ASLEEP, AND IN THE MORNING WHEN WE WAKE UP.

100



ACCEPT, RESPECT, EMPATHISE